

Where Generative AI Meets Indian Ingenuity



| CCTV Cameras | Surveillance Solutions | Home Security | Accessories
| AiO Computer | Commercial LCD Displays | Display Solutions | Digital Signages



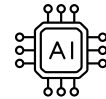
BIS-ER CERTIFIED SURVEILLANCE. PERFECTED.



Advanced
Imaging



Enhanced Market
Credibility



AI-Powered
Surveillance



Cyber Security
Compliant



Highend Security Chip
for Data Protection



Rugged Indian-
Grade Build



www.trueview.co.in



About Us



At Warner Electronics India Pvt. Ltd. we empower our customers by delivering cutting-edge Electronic Manufacturing Services (EMS) from our newly constructed, state-of-the-art facility. Our capabilities extend across Electronic Surveillance, Commercial LCD Displays, and Conferencing Solutions — all designed to be user-friendly, future-ready, and scalable to meet evolving needs. With a strong belief that a company should operate as a community, we leverage advanced tools and streamlined processes to adapt technology quickly, efficiently, and effectively.

We pride ourselves on our commitment to quality and excellence. All our products and manufacturing processes are certified to meet the highest industry standards. These certifications underscore our dedication to delivering top-tier electronic manufacturing solutions while ensuring safety, reliability, and compliance with global regulations.



Certifications



The Strength



Our new facility is a state of the art manufacturing setup with in-house SMT Line, Auto CNC Machines, Advanced R&D Facilities, High Capacity Production Lines and a full fledged admin block. The new facility is one of the largest and the best Electronic Manufacturing Setups in Central India.

The manufacturing facility is situated in India's first Greenfield Industrial City, AURIC. The facility is located in close vicinity of the highly prestigious Delhi Mumbai Industrial Corridor.

The proposed Dry Port with Custom Clearance at Jalna is just 25 km. from the manufacturing facility. This also adds much ease for the logistics and supply chain.

"Unlock the power of limitless security with

TRUEVIEW CLOUD RECORDING

Store your CCTV footage securely on Indian servers.
Access it anytime, anywhere — with total peace of mind.



**Unlimited
Storage**



**Seamless
Playback**



**Secured
Recordings**

- Effortlessly store your valuable CCTV footage and cherished memories on the secure Trueview Cloud.
- Enjoy seamless, uninterrupted recording with instant and hassle-free access to your footage 24/7.
- Choose from a range of flexible storage and recording plans tailored to perfectly suit your specific needs.
- Say goodbye to the risk of data loss caused by unreliable SD card failures, camera damage, or theft.
- Experience guaranteed security for your personal data with robust, dedicated Indian servers.



4G SIM Based CCTV Cameras



CCTVs that
work on
4G SIM Card

3MP 4G ATC
Dome Camera



3MP 4G ATC
Bullet Camera



3MP 4G ATC
Mini PT Camera



RTMP & FTP
Enabled

3MP

3MP
Resolution



256GB
SD Card



Two Way
Audio Intercom



10X Digital
Zoom



Human
Detection



3 Night
Vision Modes



IP66
Rating*



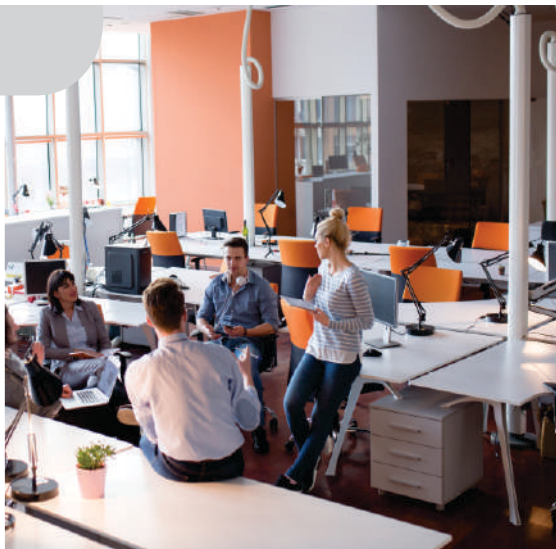
Cloud
Recording

Wi-Fi CCTV Cameras

3MP Wi-Fi ATC
Dome Camera



4G



3MP Wi-Fi ATC
Bullet Camera



4G



3MP Wi-Fi ATC
Mini PT Camera



4G



RTMP & FTP
Enabled

3MP

3MP
Resolution



256GB
SD Card



Two Way
Audio Intercom



10X Digital
Zoom



Human
Detection



3 Night
Vision Modes



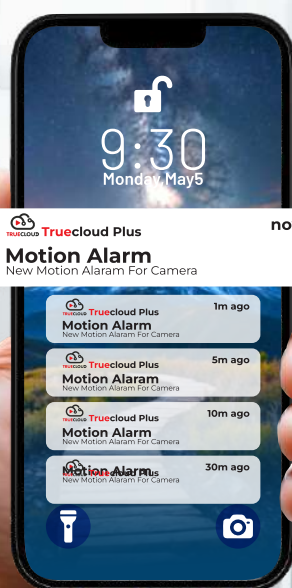
IP66
Rating*



Cloud
Recording

3MP Wi-Fi Robot All Time Colour Camera

Your Home.
Always Watched.
Always Safe.



RTMP & FTP
Enabled

3MP

3MP
Resolution



256GB
SD Card



Two Way
Audio Intercom



Human
Detection



3 Night
Vision Modes



6 Location
Presets



10X Digital
Zoom



Cloud
Recording

Dash Camera with Built-in G-Sensor



2MP
Resolution



Built-In
Microphone



Time Lapse
Recording



Easy to
Install



256GB Micro
SD Card



Built In
G-Sensor

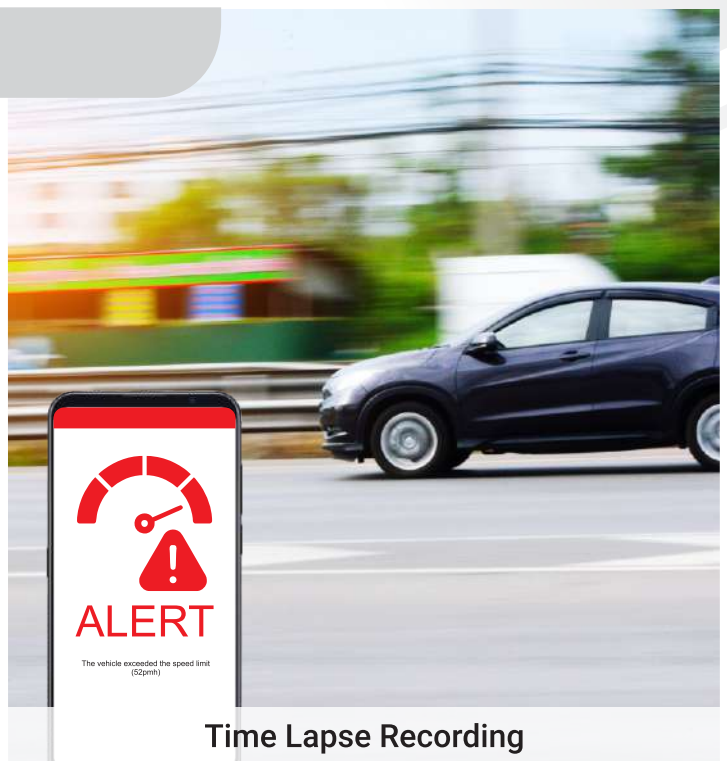


Speed
Alert

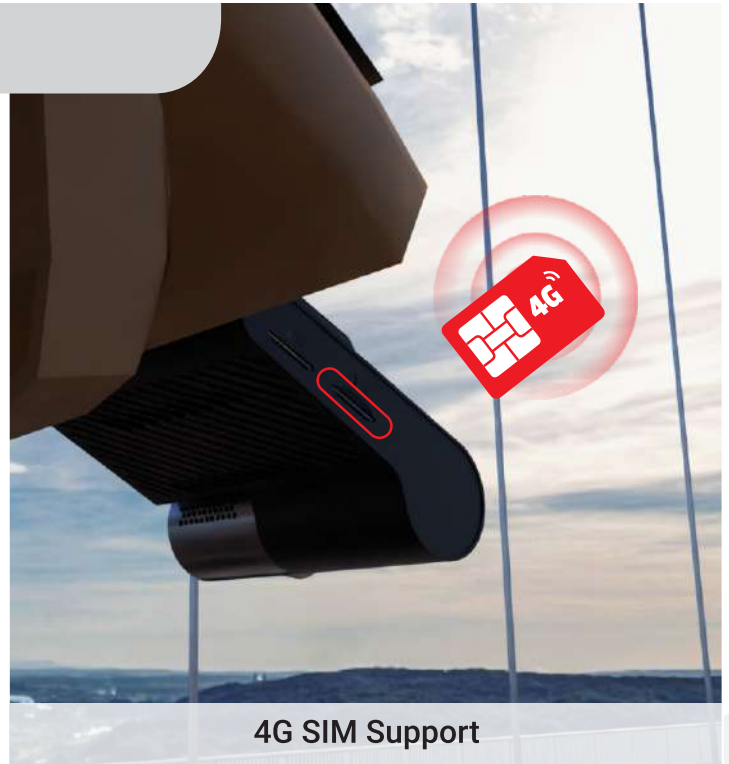


TrueCloud Plus
Mobile App

Dash Camera with Built-in GPS



Dash Camera with Built-in GPS



4G SIM Support



Up To 4MP
Resolution



Wi-Fi
Support



Time Lapse
Recording



Built-In
Microphone



256GB Micro
SD Card



Built In
G-Sensor

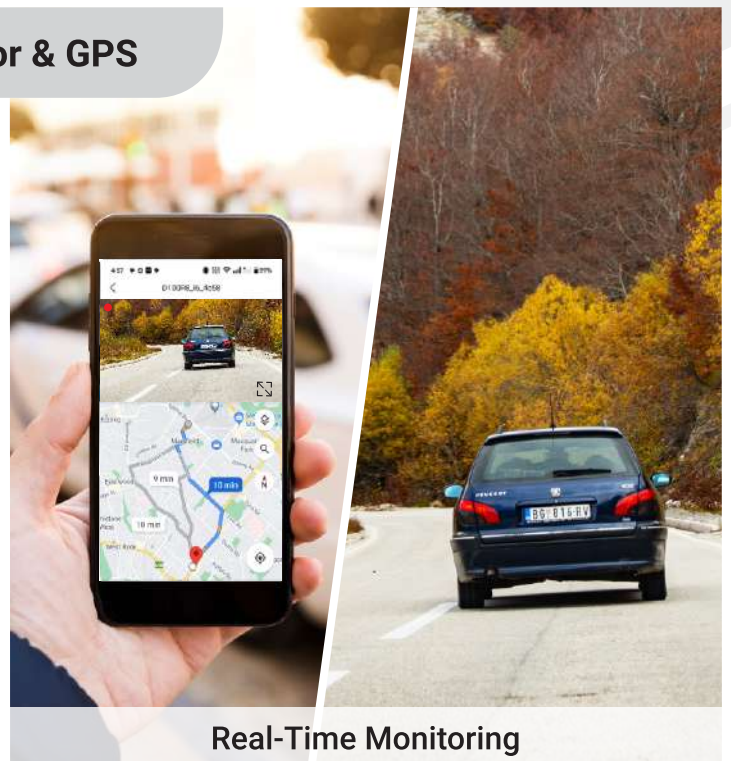


Speed
Alert



TrueCloud Plus
Mobile App

Dual Dash Camera with Built-in G-Sensor & GPS



Real-Time Monitoring

3MP Wi-Fi Video Door Bell

"Hello your package has arrived."

"Please, wait I will be there"



**Audio Chime
Included**

**Stay connected and secured
with our Video Door Bell**



256GB
SD Card



Human
Detection



Voice
Prompt



Built-in
MIC



Support
All Device



IP66
Rating



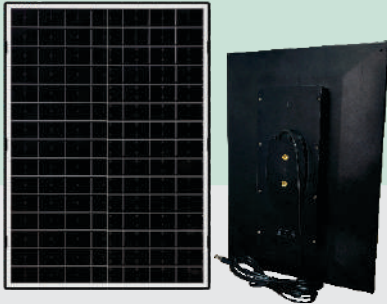
Smart Color
Night Vision



Digital Noise
Reduction

Solar Power Hub and Power System

18W Solar Power Hub with
Built-in Li-Ion Battery



18W Solar Power
System



40W Solar Power
System 12Ah



75W Solar Power
System 24Ah



Crystalline Solar
Panel



Li-ion
Battery



IP65
Rating



Smart Battery
Management



DIY
Installation



Low Battery
Protection

Welcome to the World of Wireless Surveillance

- Connect up to 10 Wi-Fi Cameras
- Connect SSD upto 6TB
- Built in Speaker for alerts



10CH Wi-Fi Dual Band
Wireless NVR



Play &
Play



256GB Micro
SD Card



iOS &
Android



Up To 6TB
SSD Support



USB



HDMI



Audio



LAN

4G Wi-Fi Router R300



4G / 5G
SIM Support



Wi-Fi6
Technology



Compatible
to Multi OS



Support
All Device



4G + Wi-Fi
Support



High
Speed



Multi
Antenna



Plug &
Play

4G Wi-Fi Router R500



4G / 5G
SIM Support



Wi-Fi6
Technology



Compatible
to Multi OS



Support
All Device



4G + Wi-Fi
Support



High
Speed



Multi
Antenna



Plug &
Play

AHD CCTV Cameras

AHD All Time Color
Dome Camera



AHD All Time Color
Mini PT Camera



AHD All Time Color
Bullet Camera



2MP
Resolution



Human
Detection



Digital Wide
Dynamic Range



Built-in
MIC



PoE
Enabled



IP66
Rating



Smart Color
Night Vision



Digital Noise
Reduction

Digital Video Recorders

DVR
4 CH Ultra Series



DVR
8 CH Ultra Series



DVR
16 CH Ultra Series



Play and
Play



iOS &
Android



Up To 6TB
HDD Support



HDMI
Port



USB
Port



LAN
Port



Audio
Out

IP CCTV Cameras

IP Ultra ATC
Dome with MIC



IP Ultra ATC
Bullet with MIC



Up to 8MP
Resolution



Human
Detection



Digital Wide
Dynamic Range



Built-in
MIC



PoE
Enabled



IP66
Rating



Smart Color
Night Vision



Digital Noise
Reduction

Network Video Recorders

NVR
8 CH Ultra Series



NVR
16 CH Ultra Series



NVR
32 CH Ultra Series



Play and
Play



iOS &
Android



Up To 6TB
HDD Support



HDMI
Port



USB
Port



LAN
Port



Audio
Out

4Ch-8Ch PoE Switch



Max. Power of
Single POE Port



Power
Distance



Built-in
Power Supply



2KV Lighting
Protection



Digital Noise
Reduction



RJ45
Connector



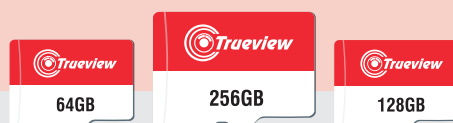
Fan-Less
Operation



VLAN
Support

Micro SD Cards & Adaptors

Memory Cards



5V & 12V Adaptors



Up To
73.8MB/s



Weather
Proof



XRAY
Proof



Supports
All Devices



Overpower
Protection



Overvoltage
Protection



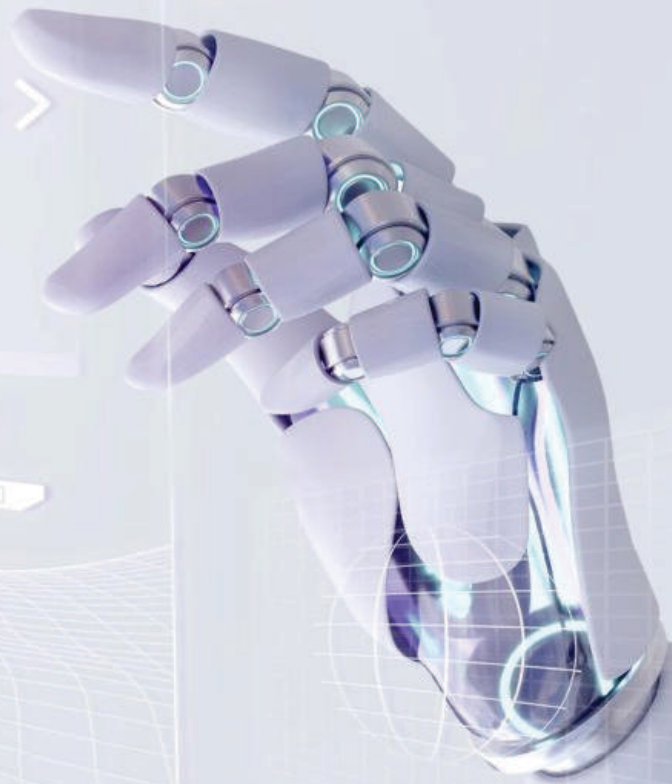
Over Current
Protection



Short-Circuit
Protection





- **All-in-One Computer ADPM**
- **Digital Signages**
- **Video Wall Monitoring**
- **Sliding Shutter Board**
- **Open Pluggable Specification (OPS)**
- **Video Conferencing Solutions**
- **Video Wall Controllers**



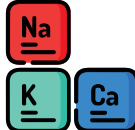



The Most Advanced Software for
Education & Collaboration


trueCONTENT





30000
3D Images, Icons
and Cliparts




**Interactive
Periodic
Table**



3500
3D STEM Videos &
Simulation Games



E-BOOKS
Content from
Grade I to XII



trueTOOLS



Widgets

- Score Board
- Lucky Draw
- Split Screen
- Worksheets
- Magnifying Glass
- Spotlight & Curtain
- Pull Down Whiteboard



Multiple Tools

- Math Tools
- Text Editor
- Scientific Calculator
- Curved Text
- Sticky Notes
- Pixel Eraser
- Object Eraser
- Erase All



Activities

- Fill in the Blanks
- Flip Out
- Label Reveal
- Match Them Up
- Rank Order
- Super Sort
- Monster Quiz
- Blackboard

trueTOOLS



AI Tools

- Image Recognition
- Image OCR
- Text to Speech
- Speech to Text
- Math Solver
- Mind Maps
- Chat with AI



For Teachers

- Share Homework
- Check Assignments
- Create Reports
- Create Tests & Quizzes
- Generate Analysis
- Generate Ideas & Rubrics
- Generate Life Like Images



For Admins

- Monitor Usage
- Track Live Classes
- Decode Reports
- Manage Devices
- Create Data Insights
- Manage Content
- Track Lesson Progress

trueAi FEATURES



100+ Language

Identification
for OCR



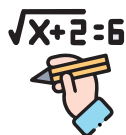
Ai Powered

Image
Generator



Math Solver

Auto solve handwritten
maths equations



Ai Chat

Ask anything !
Integrated Web
Search



Multiple Pens

Magic Pen, ABC Pen,
Rainbow Pen FX Pen
Laser Pen, Shape Pen,
Dotted Line Pen




Teaching Aids

Lesson Plans, Templates
Animations, Marketplace
Google Classroom

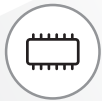


All-in-One Computer ADPM




TRUEBOARD
All-in-One Computer
With Quad-Core Processor


V-Series
All-in-One Computer
With Octa-Core Processor



Up to 16GB RAM
& 256GB Memory



9H Toughened
Glass



60,000^h Hours
Screen Life



Zero Bonding
Panel



Mobile
Voting



Screen
Recorder



Type-C
Port



2 x 20W
Speakers



450 nits*
Brightness



Subject
Library



Bluetooth
Connectivity



Anti Glare
Screen



4K UHD
Resolution



40 Point
Multi Touch*



Easy Mind
Mapping

Best Suitable For



EDUCATION



CONFERENCING



ENTERTAINMENT

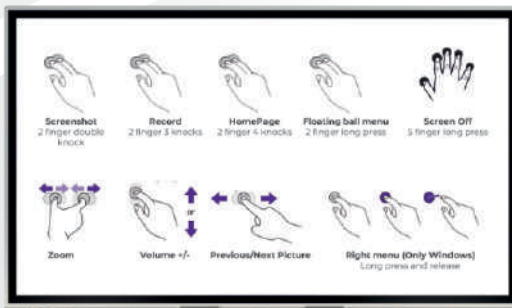
AiO Computer Hardware Features



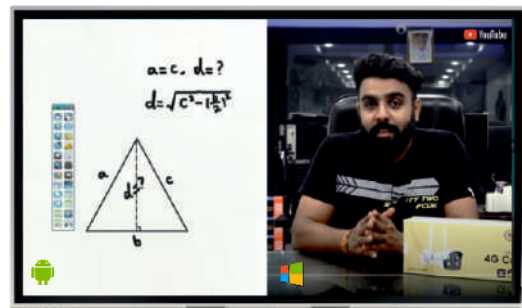
4mm Toughened &
Heat Tempered Glass



Infinite White Board with
Palm Rest Writing feature



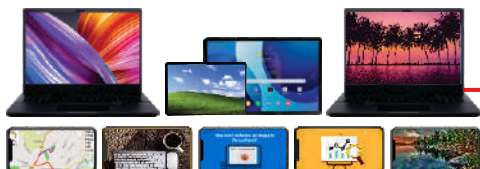
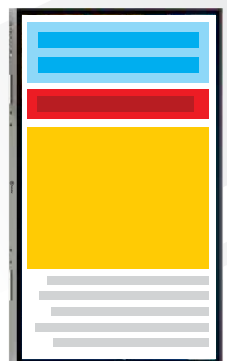
Smart Hand & Touch Gestures
for various operations & functions



Smart Split Screen with
Dual OS (Android + Windows)



Easy **Screen Rotation**
Portrait to Landscape



Wireless Screen Sharing for
up to 9 various devices



55" to 110"
SCREEN SIZE

Widest range of sizes to
best suit your requirements

AiO Device Management System

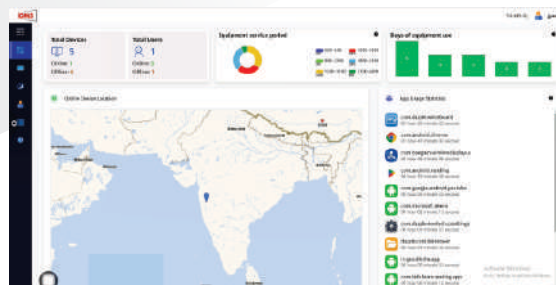
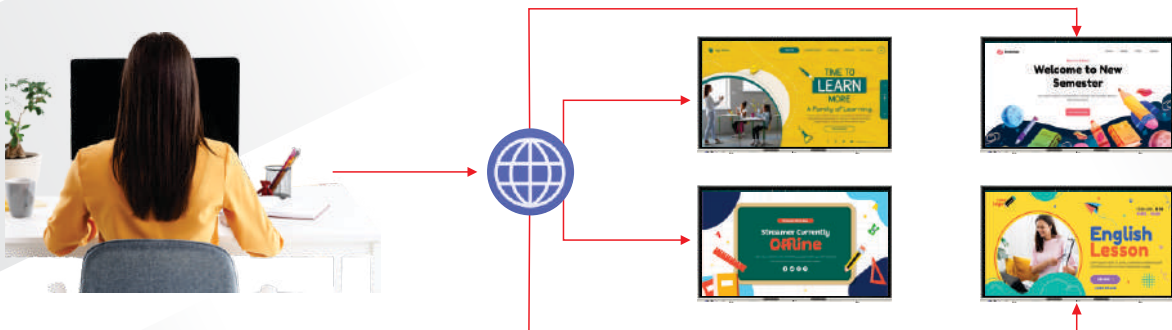


MASTERFUL AND METICULOUS MANAGEMENT

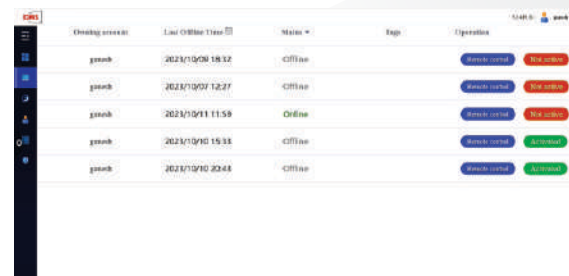
- Remote Real-time Screen Control / View / Screenshot
- Application Management - Enable / Disable / Run / Uninstall
- Adjust Parameters - Brightness, Volume, Source, Languages
- Power management - Turn On/Off, Restart, Display On/Off
- Screen Lock Management - Lock, Un-Lock, Set Screen Lock
- Device-level usage history and reports

Interactive Device Management System

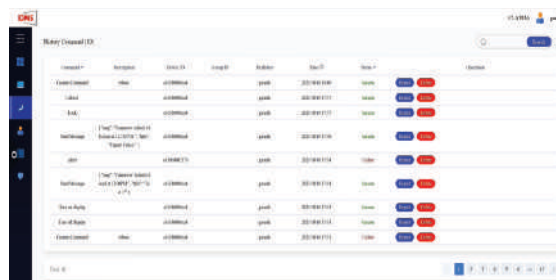
Remotely control your Display devices at various locations



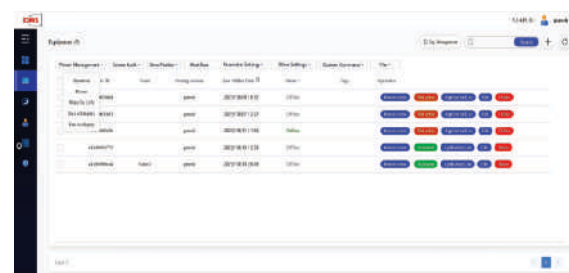
Gain control of the software and apps on all the devices



Secure your data through Private Server Integration



Send alerts or notifications to single / group of devices



Gain the power, screen and data control of your devices

Open Pluggable Specification (OPS)



| Features

- Multiple Input & Output Ports
- LAN & Wi-Fi Connectivity
- DC 12V Power
- Suitable for Computer of all brands.
- **Available in European & Asian Models**

| Customizable Configuration

| CPU

Core i5 | Core i7 Processor

| RAM

8GB | 16GB | 32GB

| Generation

2nd | 4th | 10th | 11th | 12th | 13th

| Memory

256GB | 512GB | 1TB | 2TB

Sliding Shutter Board for AiO Computer ADPM



All Green Board



Green + White Board

- Adjustable stopper to suit screen size
- High quality non reflective, magnetic panel material
- Easy writing and smooth erasing wear resistant panel
- High gloss aluminum frame. Nail Free appearance
- Handle & Lock for safety
- Available in Green, White and White + Green combination
- Suitable for 55" to 85" All-in-One Computers



All White Board

Video Conferencing Solutions

Fixed Webcam



- 2MP Sensor with 12MP Lens
- 108° field of viewing
- 1920x1080p High Definition

4K PTZ Camera



- 10X Optical + 8X Digital Zoom
- 4K PTZ. 50M visual range.
- 0°~355° Pan. -35°~135° Tilt.

4K Fixed Webcam



- 8MP Camera
- 112° field of viewing
- 3840 x 2160p High Definition

2MP PTZ Camera



- 2MP Sensor with 10X Optical Zoom and 8X Digital Zoom
- Remote controlled PTZ movement

Speaker with Mic



- 360° voice pickup
- High Fidelity Sound Quality
- Echo and noise reduction

4K Auto Framing Camera



- 4x Digital Zoom
- Built-in Dual Microphone
- 120° field of viewing

Accessories for AiO Computer ADPM

PC Sync Pod



- Supports Windows 10 / 11
- Sync PC display on Smart Board
- Control PC from Smart Board

Wireless Air Remote



- Built-in Gyroscope & Gravity Acceleration Centre
- Full keyboard design
- 10 mt working range
- 4 customizable keys

Movable Stands for AiO



- Easy to assemble
- Wheels for free movement
- Integrated Shelf
- Suitable for up to 85" Screen
- Powder Coated Finish

Digital Notice Boards & Signages

ADVANCED, ACTIVE AND ATTENTIVE ADVERTISING

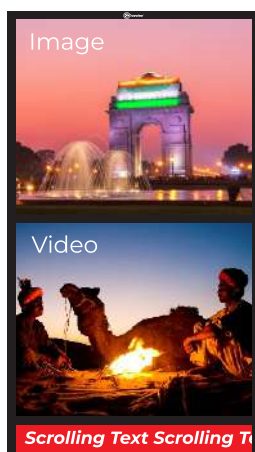
Available in various models and for various applications these signages are robust, slim and contemporary in design and lend to a wonderful viewing experience. Make every image or advertisement more presentable with maximum brightness and safe color display. Impress your guests by displaying your customized digital content that can be controlled from anyplace through a web based Digital Content Manager.

- Web based interface
- LED Backlit
- 4K Commercial Grade Panel
- Available in Floor Standing & Wall Mounted
- Horizontal / Vertical installation for wall mount
- Screen Size : 43", 55"

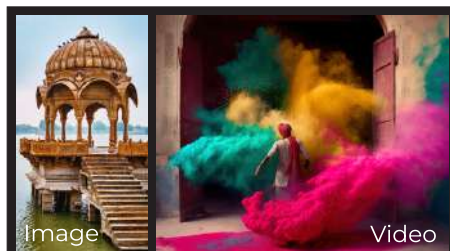


DIGITAL SIGNAGES

- A-Type Standee
- Floor Standee
- Wall Mount
- Stretch Type
- Battery Powered
- Kiosk



Our Digital Signages come bundled with the highly versatile web based Content Manager Software. Using this software, you can upload, replace, schedule the content remotely. The software also helps you with customized tiling and running multiple content on a single screen including images, videos, scrolling text, websites, presentations etc.



DSS Software Features

- Flexible layout patterns
- Displays videos, images, documents, web pages
- Manage role, user, terminal group, scheduling
- Remote content control access

| Powerful Displays

| Effortless Control

| Unmatched Value.



COMMERCIAL LCD DIGITAL SIGNAGE



4K
Resolution



Full Front
Toughened
Glass



Optional
Touch Model



2 x 10W
Speakers

A-Type Digital Signage



- Light weight folding stand
- Ideal for restaurants, cafes, and hospitality industry
- Suitable for welcome boards at entry locations
- Available in : 32", 43", 55"

Floor Standing Digital Signages



- Web Based Interface
- 4K Commercial Grade LCD Panel
- Full Face Toughened Glass Panel
- Free Cloud Based Content Management Software
- Available in 43", 55"

Wall Mount Digital Signages



- Web Based Interface
- 4K Commercial Grade LCD Panel
- Free Cloud Based Content Management Software
- Portrait & Landscape Installation
- Available in 43", 55"



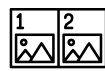
COMMERCIAL LCD DIGITAL SIGNAGE



Android
OS



Viewing
Angle - 178°



Intelligent
Split Screen



Remote
Access

Portable Digital Signage with Built in Battery

32"



- Portable Signage Solution
- Easy Screen Rotation Model
- Recharge fully in just 7 hours
- Wide viewing angle
- Fixed lockable castors
- Available in : 32"

Digital Kiosk



- Attractive Stand Shapes to suit premium interiors
- Ideal for premium retails, corporate, real estate, etc.
- Sturdy Metal Stands to fit various Screen Sizes
- Available in 43", 55"

Stretch Type Digital Signage



- 500cd/m² brightness for indoor display
- Touch and non-touch models available
- Non toughened glass display
- Ideal for shelves and display racks in malls and showrooms
- Available in various sizes & aspect ratios

FULL HD

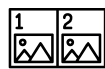
E-SERIES DIGITAL SIGNAGE



FHD1080
Resolution



Viewing
Angle - 178°



Intelligent
Split Screen



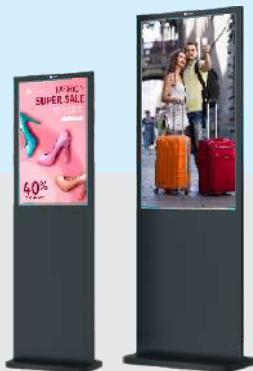
2 x 5W
Speakers

E-Series A-Type Digital Signage



- Light weight folding stand
- Ideal for restaurants, cafes, and hospitality industry
- Suitable for welcome boards at entry locations
- Screen Size : 32", 43", 55"

E-Series Floor Standing Digital Signages



- Web Based Interface
- Full HD Display Panel
- Metal Housing
- Free Cloud Based Content Management Software
- Screen Size : 32", 43", 55"

E-Series Wall Mount Digital Signages



- Web Based Interface
- Full HD Display Panel
- Metal Housing
- Free Cloud Based Content Management Software
- Portrait & Landscape Installation
- Screen Size : 32", 43", 55"



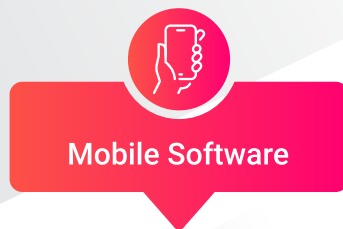
Digital Signage Content Management Platform

Upload your content to the Digital Signage even without internet* in **3 WAYS**



Built in USB Software

Plug in a USB drive to update content directly on the screen. No internet required, Play seamless Content even after restart



Mobile Software

Manage and update your signage on the go using our intuitive mobile application.

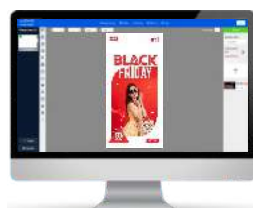


Sign IQ Mobile App

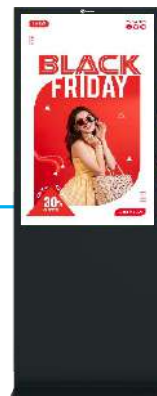


Cloud Software

Control multiple screens remotely with real-time updates through our cloud based server.



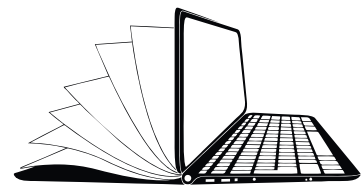
Sign IQ Server



Advanced Windows Software for Education

FASCINATING, FUNCTIONAL AND FLEXIBLE FEATURES

- Engage Students with Fun Activities
- Intuitive 4K and User Friendly UI
- Embedded Document Camera Function
- Page Roaming for Easy Presentation
- Abundant Resources & Subject Tools
- Intelligent Hand Gesture Recognition
- Customizable Content
- 14000+ Vector Graphics
- Writing Tools & Hand Gestures
- Built In Lecture & Lesson Creator



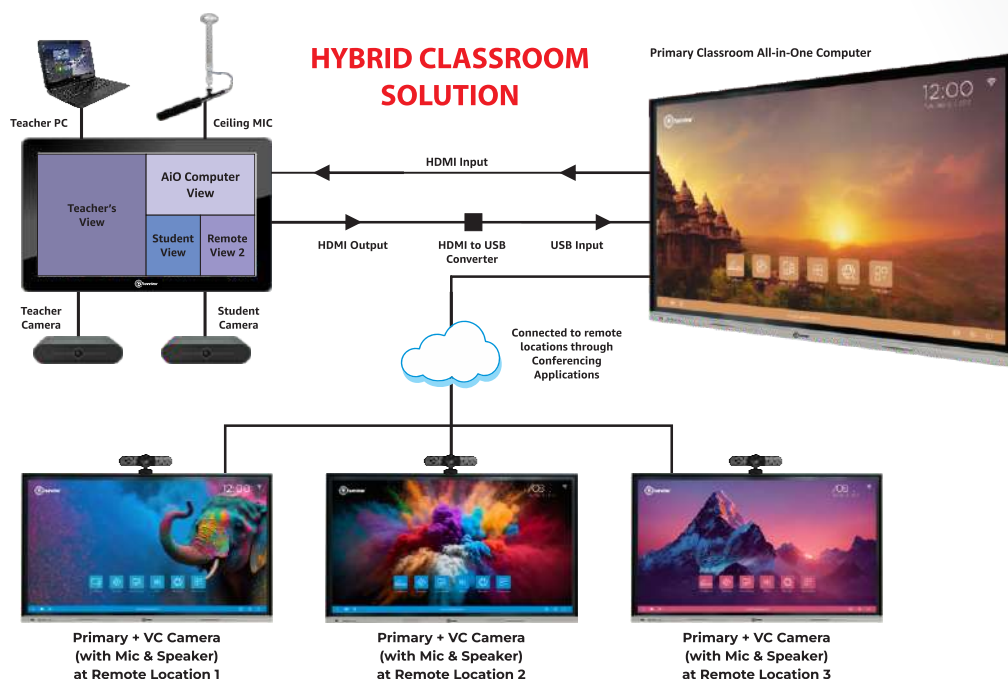
TrueBOARD



CAPACIOUS AND CLEVER CAPTURING

Presenting the most advanced Smart Lecture Capture System, TrueCap. This advanced system makes it easy teach the students with live and on demand videos. This enables the educators to easily record their video courses and share with students in or outside the campus. With TrueCap it becomes very easy to capture, switch, record, stream and deliver video content to a wider audience, whether live or on demand. locally or remotely. This system combines a Video Station, Pick-Up Microphone, Auto-Tracking Cameras for both teacher and the student and Online Director Platform to provide the most flexible and effective lecture capturing.

- One-Touch Recording and Broadcasting.
- 6 Screen Layout Modes for various scenarios.
- Intelligent Panorama & Close-Up switch function.
- Supports Instant Image Positioning.
- Built-in Disk Recording Protection Strategy.
- Smooth and stable live broadcast service.
- Wear-Resistant Capacitive Touch Technology.

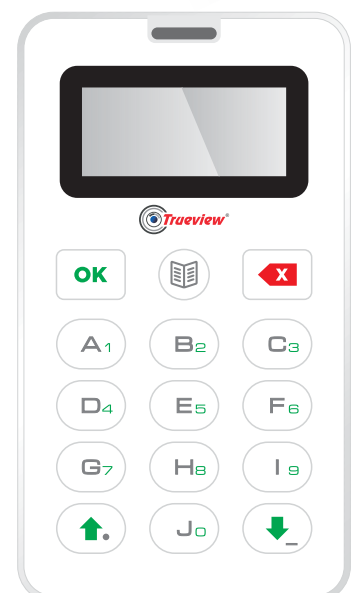
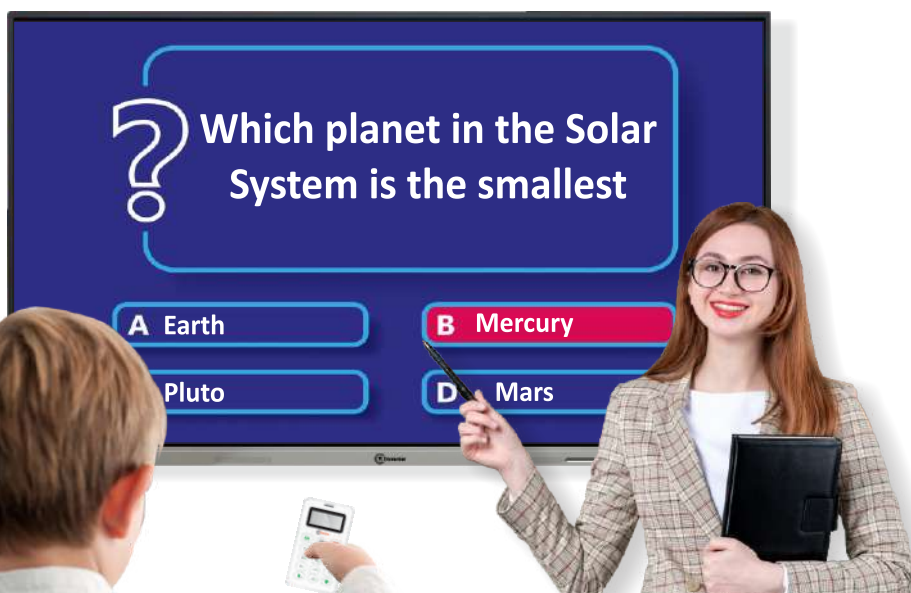




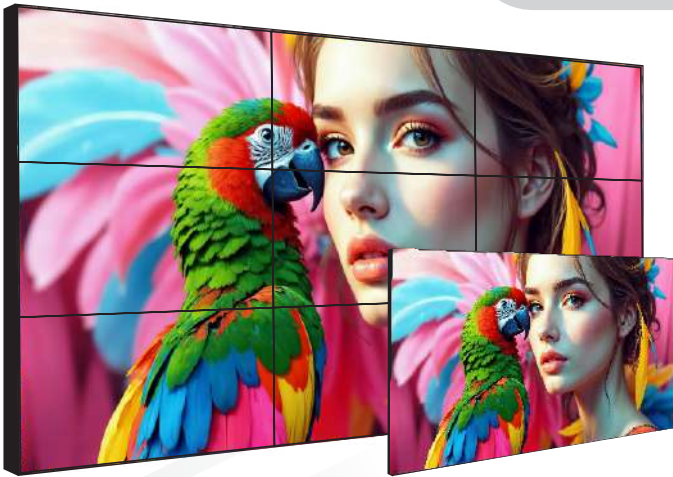
CREDIBLE AND COHERENT CONCLUSIONS.

With TrueClick at hand, students are no more passive listeners as before. Instead, they can now be active participants. TrueClick enhances the interactive learning in class by giving a voice to each and every student. With TrueClick Student Response System, you can engage the students with activities like instant quiz. Set different questions, seek answers and create answer reports easily. Create an interactive learning environment where every student can participate actively and give real-time feedback. With TrueClick, teachers can track progress through instant feedback to determine whether the students need reviewing, re-teaching or to continue with the next lesson.

- Engage Every Student
- Track Progress Easily
- Assess Student Understanding
- Transmit Widely & Stably
- No Installation Required
- Full Featured Software



Video Wall Monitors



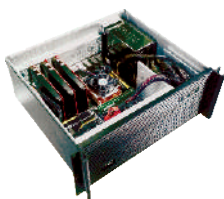
VIBRANT, VIVID AND VERSATILE

Trueview LCD Video Wall Monitors are built with high quality industrial grade components for 24x7 usage. Best suitable for control rooms, airports, shopping malls, stadiums, and other large public venues these video wall monitors can be customized to suit any infrastructure, any business or even entertainment centric experiential requirements.



- Matrix from 1x2 up to 20x20
- Widely used in CCTV Control Room, Education & Research Center
- Used for Conferencing and Presentation
- Setup with Multiple Input & Output view of PC, Mobile, Video, CCTV etc at a time
- Available in 49" & 55" Sizes with 0.8 / 1.8 / 3.5 mm Bezel Size

Video Wall Controllers



| VIC Graphic Controllers & HDMI Matrix



| EVCN & IPVM Controllers



| Digital Signage Controllers



| Distributor & TV Wall Controllers



Upcoming Product Range

DIY CCTV Range

- Wi-Fi & 4G Robot - 2 / 3 / 4 / 5MP
- Wi-Fi & 4G Dome - 3 / 4 / 5MP
- Wi-Fi & 4G Bullet - 3 / 4 / 5MP
- Wi-Fi & 4G Mini PT - 3 / 4 / 5MP
- Wi-Fi & 4G Linkage - 2+2 / 3+3MP
- 18X & 36X PTZ - 4MP / 8MP
- Wireless Wi-Fi NVR with 7 inch / 10 inch Built-in Display
- Solar Single Lens Bullet
- Smart Door Lock - 4 Models

IP CCTV Project Series

- Wired IP - 2 / 3 / 5MP
- AI Powered Wired IP - 4 / 5 / 8MP
- Verifocal Camera - 4 / 5 / 8MP
- Pro Series NVR - 4Ch to 128 Ch



“Evolving with purpose
Growing with passion”



Manufacturing
10 Lac CCTV
units per month



Manufacturing
20000 LCD Display
units per month



2.50 Lac sq. ft.
of manufacturing
facility



1000+
Employee
Strength



30 million+
Happy
Customers



Actual Image of the Facility

www.trueview.co.in

Our state of the art manufacturing facility



State of the Art SMT Machine



High Capacity Manufacturing Lines



Automatic Lens Focusing Machine



Full Fledged Service Department



Precision Printing Setup



Strong Technical Support Team



Advanced Research & Testing Labs



Clean Room for Display Manufacturing



Robust Quality Testing Standards

- Awards & Accolades -



ASIA
Excellence
Award

Top Player in
Technological
Innovation



Forbes
INDIA

Reliable Brand
of India



**Business
Connect**
INSPIRING BUSINESS COMMUNITY

Company of the
Year 2023



Forbes
INDIA

Atmanirbhar
Trueview



THE TIMES OF INDIA

Inspiring
Entrepreneur
Award



siliconindia

Most Promising
CCTV Brand



Registered Office : Plot No. 56, Sector 13, AURIC, MIDC, Shendra, Chh. Sambhajinagar - 431154 MS, India

Contact : +91 9225550000

Email sales@trueview.co.in

www.trueview.co.in