

# SLIDING BOARD 75 INCH (ALL White) T29927-A



## FEATURES

- **Writing Cross Boards**

This boards are made without frames which allows seamless writing on joints of the board.

- **Larger Size**

The frameless design provides extra space on board compared to the traditional design

- **Slide rail and wheel on top**

The installation of the track and pulley of the hidden sliding system on the top can completely eliminate the entry of dust, dust, preventing the sliding from being obstructed, thus structurally solving the problem of sliding being affected by dust.

- **Writing Surface**

The writing surface is essentially a White Painting 0.2mm thickness metal sheet that is crafted by us specifically for writing with Marker Pen.

- **Frame**

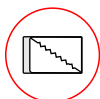
All our chalkboard frames are manufactured from extruded Alloy Aluminium 6063-T6, the thickness (1.2mm) frame in the form of a closed section, to offer maximum rigidity, which is anodized in a seamless Matte Silver finish for long life and a professional look

- **Corners**

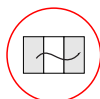
100% Virgin High Impact Strength ABS injection molded corners are smartly riveted into the frame to provide rigid all-round support to the board along with a pleasing appearance.



Lockable Slider



Frameless



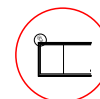
Writing Free



U Shape Railway



Alloy Aluminium Frame



Wheels On Top

## Specification

Dimension Total dimension 4000 x 1205mm

Suit for display Width≤1950mm, Height≤1110mm, 105mm≤Depth≤140mm

Board

Board dimension 1015 x1115mm

Surface: Glossy White, painted steel plate surface thickness: 0.2mm, can adsorb magnetic nails;

Applicable writing tool: Marker Pen

Core layer: 14.5mm polystyrene

Backside: Galvanized steel plate

Frame: Champagne colored aluminum alloy border

Frame

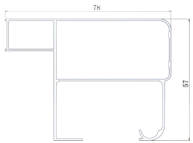
Upper frame: Aluminum 57x78x4000mm

Down frame: Aluminum 57x78x4000mm

Left/Right frame: Aluminum 29x100x1147mm

Cover frame: Aluminum 110x1147mm

PACKED CONTENTS



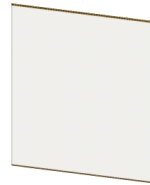
1X Upper Aluminum Frame



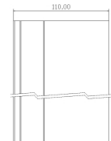
1X Down Aluminum Frame



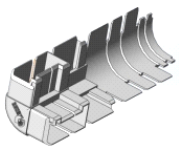
2X Left/Right Aluminum Frame



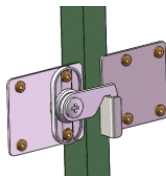
4X Boards



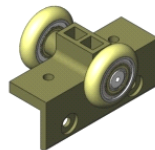
2X Left/Right Aluminum Cover



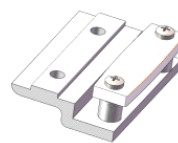
4X Plastic Corner



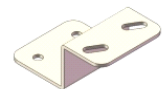
1X Locker



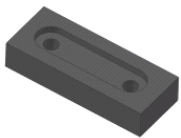
4X Upper Wheel



4X down Wheel



8X Metal Plate Connector



3X Stopper



6X Metal Bracket



2X Handle

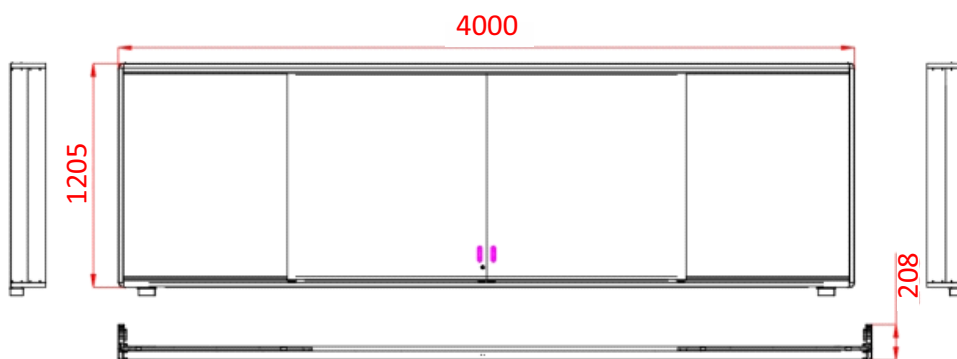


6X Screw



2X Chalk box

TECHNICAL DRAWING



\*Note: Product Specifications are subject to change without prior notice.