

# Wi-Fi Robot Pan-Tilt Camera With Built in Screen

## USER MANUAL

Ver. : 01

Please read the Quick Guide carefully before using the camera

www.trueview.co.in

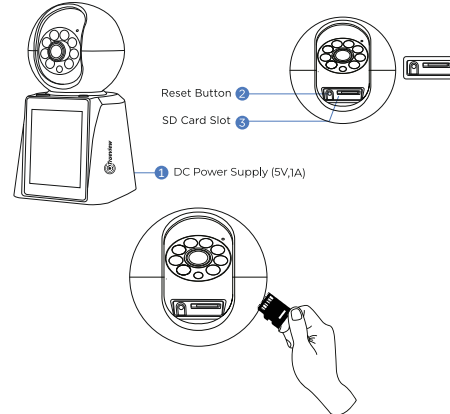
### About this product

This manual is only a guide for related products and may differ from the actual product, please refer to the actual product. Due to product version upgrade or other needs, this manual may be updated without further notice!

### Interface Description

This manual is suitable for various types of cameras. (The appearance may be different due to different batches. The details are subject to the receipt. This manual is only for the installation instruction of this series of equipment)

#### 1. Wi-Fi Robot Pan Tilt Camera with Built in Screen

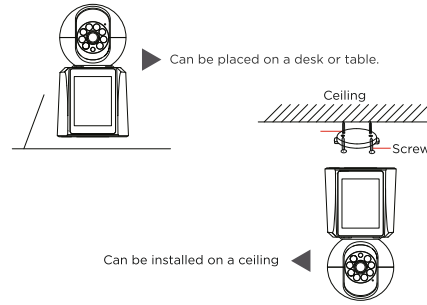


Note : When the device is powered off, insert the SD Card then plug in power to the camera

①

### Installation and Placement

#### 1. Wi-Fi Robot Pan Tilt Camera with Built in Screen



1. Insert the expansion rubber plug into the drilled ceiling, and use the screws to fix the base of the bracket to the ceiling.
2. Install the device on the bracket.

#### • Software Installation

App Download and Installation: Use your mobile phone to scan the below QR code to download and install "TrueCloud", and follow the APP prompts to complete user registration

Note: Compatible only with iOS 9.0 and above or Android 5.1 and above



Truecloud  
Android App



Truecloud  
iOS App

②

### Configuration with Wi-Fi Network Mode

1. Log in to the "TrueCloud" APP, click the "+" button on the interface (Figure 1) and enter the scanning interface (Figure 2)
2. Devices that support Bluetooth distribution network can use the Bluetooth connection method. First select the camera you want to add in the pop-up box of new devices found, and click the "Add" button at the bottom (Figure 3).

(If you do not see the pop-up box, please scan the device body according to the QR code on the APP, complete device configuration and addition according to the guidance of the APP)

Note: Before adding the camera, please make sure that the Bluetooth function of the mobile phone is turned on. Do not turn off the Bluetooth during the adding process. If a prompt box pops up to enable Bluetooth or Bluetooth authorization during the adding process, please follow the steps in the prompt to enable it.



Figure 1

③

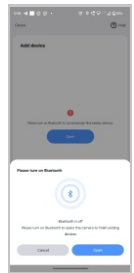


Figure 2

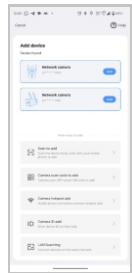
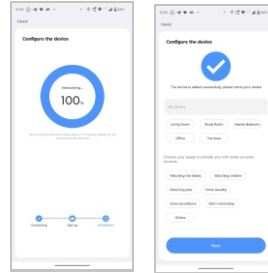


Figure 3

4. The configuration would take less than a minute to configure

After the configuration is successful, set a name for the camera and click confirm



5. After successful configuration you can enable or disable the Motion Detection Alerts or the App Notification Alerts as desired



⑤

6. Place / Install the device at the desired location and ensure adequate Wi-Fi signal strength to have a smooth access to the device

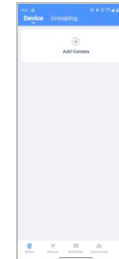


⑥

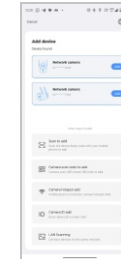
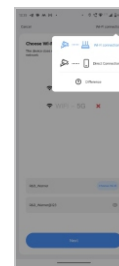
### Configuration with AP Network Mode :

In case there is no Wi-Fi network near the location where the camera is to be installed, click the "Wi-Fi Distribution Network" button in the upper right corner of the Wi-Fi selection interface. Click to switch to "Direct Connection" in the pop-up window.

1. Open the APP, click the "+" icon in the middle of the interface to enter the scan code interface. (Make sure the mobile Bluetooth is enabled)
2. After clicking 'Add camera' all the available devices would be displayed as a list.



3. At the Wi-Fi selection interface, click the "Direct Connection"

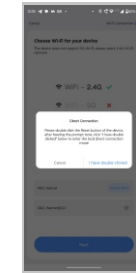


4. Click on Confirm



⑦

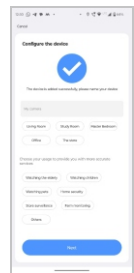
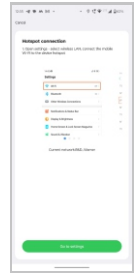
5. Press the reset button on the device twice and then click on "I Have Double Clicked"



7. Select the AP Mode and Connect by using password 11111111



6. Go to Wi-Fi settings of mobile find camera AP name
8. Select name for the device or enter a name and confirm.



9. After successful configuration you can enable or disable the Motion Detection Alerts or the App Notification Alerts as desired

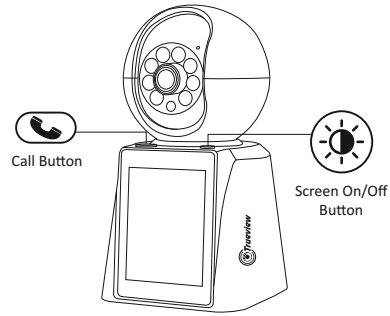



10. Place / Install the device at the desired location and ensure adequate Wi-Fi signal strength to have a smooth access to the device




**Note:** The direct connection needs to be connected to the camera's AP mode to preview the camera screen normally. In this mode the camera cannot be viewed remotely.

**Funcnality of Button**



 1. The call button allows you to initiate and end video calls  
 2. Press it once to start a video call, and press it again while on a call to hang up.

 Single button control to screen turn on or turn off screen.

**Note:** The video call button function will work if the camera is online and the internet is connected.



**Warning**



In case of fire or lightning, pls don't put product in damp and raining place. Operate or maintain only according to the user manual.



Be careful when you see an attachment with the Dangerous Voltage Sign which might cause serious electric accident.

	<b>Warning</b> CAUTION OF ELECTRIC SHOCK TO AVOID INJURY	
<b>Warning</b>	To reduce electric shock, unprofessional people please don't open product front panel or rear panel!	<b>Warning</b> In case of electric shock and fire, pls don't use power supply beyond power list in user manual

Notice:

1. Ensure your equity, please read the user manual carefully before you use the product
2. Please contact professional people if you need install and maintain the product
3. Working Environment : temperature of -20°C~+60°C, relative humidity under 85%
4. Please do not exceed the standard range of temperature, humidity and voltage as suggested in the user manual.